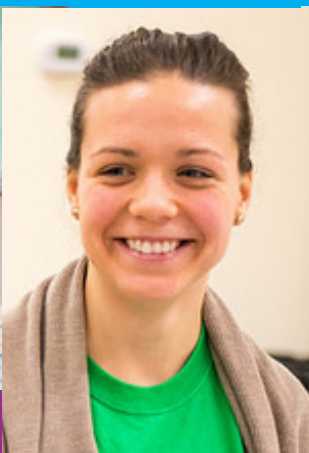




Wellness.



Recovery.

Transformation.



Leadership & Transformation of Health Care for Correctional Health Services

PHSA together with BC Mental Health and Substance Use Services (BCMHSUS) will take on responsibility for the delivery of health care services in BC Corrections facilities as of October 2017. PHSA is mandated to improve the quality and continuity of care for inmates across the province during their time in correctional facilities and as they reintegrate into the community. This will help to improve access to primary health care, as well as mental health and substance use supports for inmates, key needs that have been identified not just in BC, but internationally.

The Provincial Health Services Authority (PHSA) plans, manages and evaluates selected specialty and province wide health care services across BC, working with the five geographic health authorities to deliver province-wide solutions that improve the health of British Columbians. PHSA embodies values that reflect a commitment to excellence. These include:

Respect people • Be compassionate • Dare to innovate • Cultivate partnerships • Serve with purpose

Specialist, Learning and Development

Regular and Temporary Full Time Opportunities Available
Corrections Health Services
Vancouver, BC

Reporting to the Learning & Development (L&D) Director, the Specialist, L&D is an innovator, knowledge translator, facilitator and change agent responsible for developing & delivering BCMHSUS educational programs and initiatives. In collaboration with the L&D team, designs, delivers and evaluates innovative educational strategies and programs such as: orientation, core competency training, special events and conferences.

Duties/Accountabilities:

- Works collaboratively with program leaders, educators, and staff to assess program and cross-program clinical education needs and priorities and develops learning strategies and education plans to meet those needs. Implements and evaluates learning programs.
- Provides education, consultation, guidance and support to clinical educators on curriculum design, materials development and effective learning strategies including teaching, facilitation and simulation and provides on-the-job support to clinical educators and staff. Assists with site-wide implementation and coordination of initiatives. Establishes evaluation plans using logic and Kirkpatrick models to ensure learning programs are meeting learning outcomes.
- Leads the development, implementation and maintenance of assigned competency-based learning programs for orientation and continuing education of staff, integrating these with professional practice standards and the performance management process. Ensures the development and updating of resources to support such education in order to develop and maintain staff competency with changing procedures, processes and clinical equipment.
- Ensures specialized programs/projects deliverables are completed on time and on budget, as identified in the project plan. Identifies gaps and tracks metrics as they relate to the project deliverables and provides consultation, guidance and support to designated project staff, contractors and stakeholders. Develops, revises, and maintains existing educational programs as well as new program/course/conference development.

Qualifications:

A level of education, training, and experience equivalent to a Master's Degree in Education (Adult Learning, Education Leadership) or a related field plus five (5) years of L&D experience, including course design, material development and facilitation. Experience/certification in Insights, 360-feedback, and/or other leadership and development diagnostic tools an asset.

Expertise in instructional design, delivery and evaluation methods for individuals and groups. Expertise in graphic/document design and digital/elearn solutions. Video production experience is an asset. Knowledge of change management methodology and proven ability to translate it into practical business solutions. Successful project management experience. Strong interpersonal communication, leadership, strategic and innovative thinking, inspired coaching, interpersonal and influencing skills. A strong work ethic with the ability to effectively multi-task and meet deadlines. A consummate team player who will be willing to pitch in and co-facilitate and/or co-develop with team members. Commitment to, and demonstrated involvement in, continuous life-long learning. Outstanding written and verbal communication skills. Highly skilled with MS Office products, particularly Word, PowerPoint and Excel and other education-related tools and resources.

We invite you to apply by visiting <http://jobs.phsa.ca> where you can register for the first time or enter your Username and Password in order to re-access your profile on our system.

Applications will be accepted until position is filled.

For more information on all that the PHSA has to offer, please visit jobs.phsa.ca.

For more information about the BC Mental Health & Substance Use Services, please visit bcmhsus.ca.

PHSA is committed to employment equity and hires on the basis of merit. We encourage applications from all qualified individuals, including Aboriginal peoples, persons with disabilities and members of visible minorities.

